

# High Performance TR Module powered by **CodeOne™** TEST SOLUTIONS

An integrated solution by COM DEV Ltd.

A major breakthrough in pulse measurement is now available to TRM manufacturers. The Agilent PNA-X wrapped around with COM DEV CodeOne™ measurement software enables manufacturers to perform thousands of measurements within minutes. The optional e-trak™, an inline calibration tracking switch matrix offers unmatched repeatability and accuracy for multiport testing.

Until now, TRM manufacturers couldn't have accurate pulse measurement at high speed. The new enhancements in the Agilent PNA series combined with CodeOne™ measurement software will produce fast accurate pulsed and non-pulsed measurements within minutes. The optional e-trak switch matrix allows **fast multiple DUT** testing, removing the production bottleneck caused by the existing pulse measurement systems.

## Agilent PNA-X Analyzer Enhancements

Industry's first 2-port network analyzer with internal second signal source

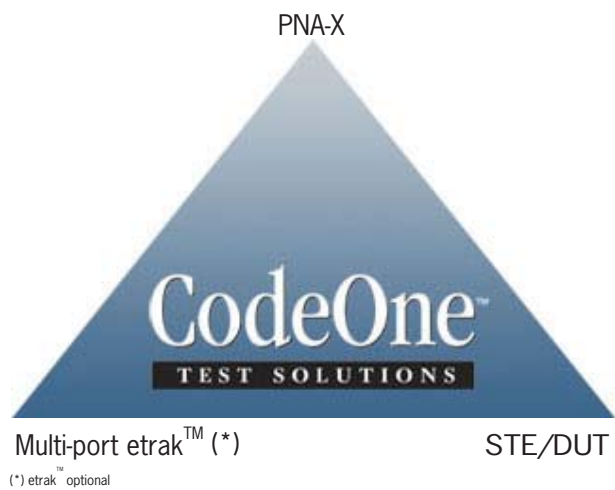
Industry-leading performance with the best source harmonics and the most linear receivers

Internal combining network for simplified two-tone measurements

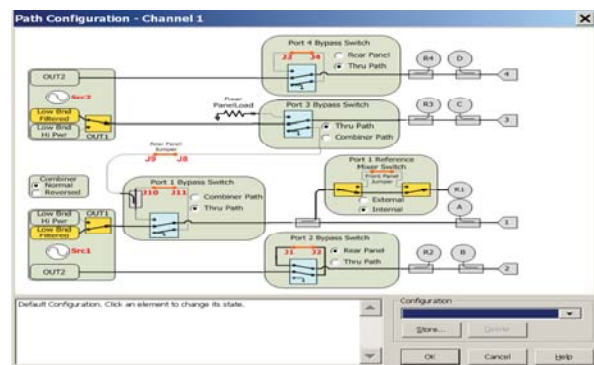
Internal modulators and pulse generators for fast, simplified pulsed measurements (pulse profiles up to 30 times faster than using external pulse generators)

Rear panel access loops and internal switches for signal conditioning or single-connection multiple measurements

**New enhancements reduce TR Test System equipment count by 50%**



## PNA-X Path Configuration



The PNA-X can be configured to perform various measurement setups through internal switches for signal conditioning or single-connection multiples measurement.



155 Sheldon Drive, Cambridge, Ontario N1R 7H6  
Tel : - 519-622-2300 ext 2388 Fax: - 519-622-1691  
www.comdev.ca/codeone